



European Head Office

Canada house, Gatwick Road,
Crawley, West Sussex,
United Kingdom. RH10 9RE

Tel: (+44) 01293 522266
Fax: (+44) 01293 552295

UK Free Phone:
800 980 1999

Canadian Head Office

2379 Lakeshore Road West,
Oakville, Ontario,
Canada. L6L 1H4

Tel: (905) 825 8827
Fax: (905) 825 2513

North American Toll Free:
1800 547 7727



www.canadianspacompany.com



Garden spas & gazebos



a revitalising experience

www.canadianspacompany.com

spas explained

Features to look for when choosing your spa.

- ¥ **Multi-level seating** - different jets provide a new spa experience in each seating position.
- ¥ **Body contoured lounge** shaped for comfort and support so you can lay down and really relax.
- ¥ **Powerful water pumps** ranging from 4hp up to 8hp
- ¥ **Electronic control pad** - for temperature, filter cycles, water jets, air jets and lights.
- ¥ **1.5hp hot air blower** - heated air keeps the water warm and it enhances your spa experience by unleashing thousands of tiny massaging heated air bubbles through the air jets. This hot air can also be injected into the water massage jets for the 'Turbo' action.
- ¥ **3kW heater** to keep your spa at a constant 40°C.
- ¥ **Cover** - custom fit to minimise operating costs and maintain and maximise safety.
- ¥ **Ozone cleaning system** - an ultraviolet light system acts to automatically ozone the water at regular intervals, to disinfect and kill bacteria in the water.
- ¥ **Interactive jets** - can be easily manipulated to blow heated air and heated water in varying combinations for different effects of massage.



- ¥ **Aromatherapy unit** - built in unit as part of the hot air blower system to capture the power of scent to enhance relaxation and improve your overall state of mind.
- ¥ **Steps** for easy access to the spa.
- ¥ **L.E.D Light** with changeable blue/red/green L.E.Ds to create the mood of your choice.
- ¥ **Chemical kit** to keep water clean and fresh.

Garden spas & gazebos

a treat for you - a treat for your whole body



Ever since the Romans invented baths, people have enjoyed the indulgence and feeling of rejuvenation provided by a hot spa. Now you can enjoy what was once an occasional luxury every day of the year in your own garden. The Canadian Spa Company, one of Canada's leading manufacturers have years of experience in outdoor leisure products and only the very best components, the quality and attention to detail is second to none.

pressure points

All of our spas incorporate a unique pressure point system, which delivers soothing water to specific points on the body. If your problem area is in the hard to reach neck or shoulder region, many of our spas have a unique moulded neck support with recessed neck jets, creating a truly invigorating experience. Additionally, across all our spas, various types of jets allow you to massage different muscles with different water pressure.

Dual speed controls mean you can adjust the jets — from a soft gentle massage or a vigorous work out.

spas that last

All spas have high quality stainless steel ball bearing jets. The proven efficiency of this jet system assures you a reliable performance that you will enjoy for years to come. The shells are made from super tough, four layer bonded plastic and acrylic, which eliminates any blistering or cracking.

choose your location

When thinking about where to position your spa pool, you should consider:

- ¥ The view from the house to the spa, and the view from the spa itself.
- ¥ Ensure quick and easy access from your house to the spa.
- ¥ Direction of drainage. Water should always drain away from the spa. Do not locate your spa in a low run-off area — rainwater could flood the area and cause pump and equipment damage.
- ¥ If you are installing the spa within a deck, the entire spa base must be sitting directly on the prepared base. The lip of the shell must not support any weight.
- ¥ The minimum clearance for entry to the spa's access panel for servicing is 1 metre.
- ¥ The spa should not be located near or under overhead wires and must be kept clear of all electrical appliances.

planning permission

Under normal circumstances planning permission is not required, but we recommend consulting your local planning office prior to purchase.

pre-delivery preparation

- ¥ The site you select for your spa must be a flat, level continuous surface that contacts the bottom of your spa fully.
- ¥ Spas weigh between 900kg and 1,400kg when full, so a solid support is essential. A 10-15cm thick reinforced concrete slab is ideal, but not a requirement. In most cases your spa can be placed on a properly fitted existing patio. Your spa can be mounted on a deck, but it must be of solid construction. Either way, it is recommended you install your spa at ground level to allow easy internal access.
- ¥ The base needs to be at least the same size as the footprint of your spa. Check individual spa measurements for details.
- ¥ **European** The power supplied must be a dedicated 20 amp (30MA trip) RCD protected circuit. You will need to get a qualified electrician to undertake this work.
- ¥ **North American** The power supplied must be a dedicated 50 amp GFCI protected circuit. You will need to get a qualified electrician to undertake this work.

delivery and access

The spa will arrive as a unit and cannot be dismantled. You will need to have sufficient clearance for the spa to be rolled into place on a trolley, either on its side or on its base. (See measurements for each spa.)

relieve stress and pain

The massaging action of a spa will accelerate the healing process of aches and pains. Warm, swirling water reduces stress and allows you to rest, giving a better nights sleep by refreshing your body and mind to tackle the next day.

Sufferers from arthritis with painful or inflamed joints will find that hydrotherapy will help relax the muscles and allow a greater range of motion in the joints.

Canadian Spa M-7 Control System

M-7 Control Systems are the most advanced spa controls ever developed. We created the first reliable electronic spa control nearly twenty years ago and M-7 technology is the biggest breakthrough since. By coupling our unique, patented software and design with state-of-the-art materials, M-7 technology provides you with a more reliable system that is less expensive to install and maintain. M-7 Controls are intended to accommodate the most demanding new spa designs and advance water temperature management into the new millennium.



Escape At Your Fingertip

The Canadian Spa Company deluxe control system uses microprocessor technology to access temperature and diagnostic controls. It's simple to use and requires no programming. All controls are within easy reach making your escape as close as the touch of a button.

Ozone



We are a global leader in superior hot tub components and control systems. The Canadian Spa company has achieved a revolutionary advancement in ultraviolet ozone generation technology with the introduction of Plasma Cell™ Ozone — the most efficient and reliable source of natural disinfecting ozone on the market today.

Ozone features Smart Start™ technology, which combines an innovative electronic ballast with a high-output, energy-efficient Plasma Cell™ UV lamp. The solid-state electronic ballast eliminates the usual start-up flicker, sputter and harmful electronic noise associated with conventional iron ballast ozonators. That means no more electronic control system lock ups and needless GFCI tripping. The highly efficient plasma cell within the unit generates consistently higher levels of ozone with 1/3 the energy consumption of conventional UV generators.

These two ground breaking technologies deliver unparalleled start-up and ozone production reliability. In fact, accelerated testing has shown that the ozone generator produced over 100,000 fail-proof starts with minimal depletion of ozone generation and output. Operates with an appealing glow.



Smart Sensor Technology:

- ✧ Both sensors are identical
- ✧ Sensors monitor each other via software to regulate spa functions (water flow, temperature)
- ✧ Assures a proper operating environment for the heating element
- ✧ Multiple high limit safety systems
- ✧ All safety functions are always active
- ✧ Eliminates excessive cycling
- ✧ Automatically adapts to flow direction
- ✧ Detects flow restrictions such as a dirty filter or slice valve
- ✧ Minimises calcium build-up on the element

Heater Tube:

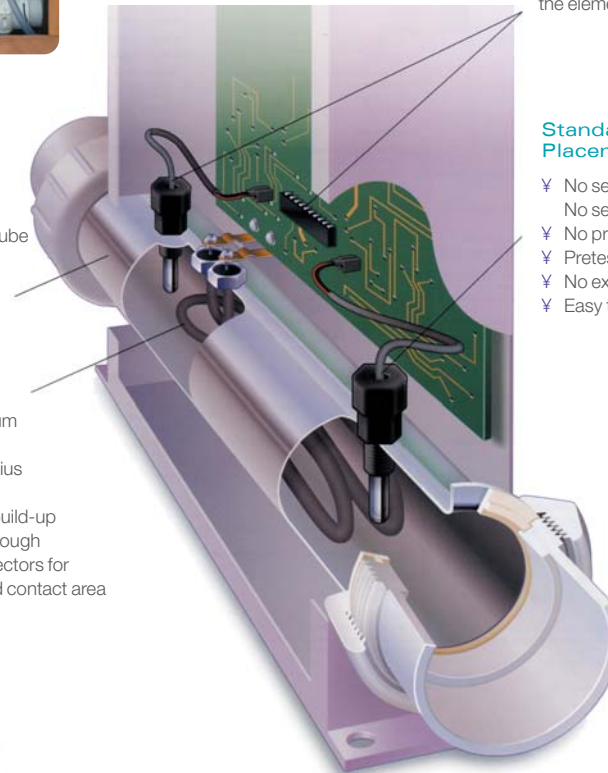
- ✧ No welds required on tube
- ✧ 316 stainless steel
- ✧ Front mounted
- ✧ Easier to service

Heater Element:

- ✧ Incoloy and Titanium material options
- ✧ Enlarged bend radius
- ✧ No tie wires
- ✧ Minimises debris build-up
- ✧ Maximises flow through
- ✧ 3/8" hex nut connectors for added stability and contact area

Standardised Sensor Placement:

- ✧ No sensor installation in spa wall, No sensor mount
- ✧ No pressure switch problems
- ✧ Pretested with sensors in place
- ✧ No external sensor wires
- ✧ Easy to troubleshoot and service



alberta spa

The Alberta Spa features a body contoured lounge to really help you relax and unwind. It provides a unique and invigorating way to relieve stress in your neck and shoulders.

	SILVER	GOLD	PLATINUM
Water Capacity	335 Gallons 1500 L	335 Gallons 1500 L	335 Gallons 1500 L
Dry Weight	857 lbs, 389 kg	857 lbs, 389 kg	857 lbs, 389 kg
Cabinet	81 x 81 x 38, 213 x 213 x 98.5cm	81 x 81 x 38, 213 x 213 x 98.5cm	81 x 81 x 38, 213 x 213 x 98.5cm
Seating Capacity	5-6	5-6	5-6
Controls	Digital M7 technology	Digital M7 technology	Digital M7 technology
Pump	4 Hp	4 Hp	2 – 4 Hp pumps
Heater	3 kw	3 kw	3 kw
Blower	N/A	1.5 Hp Heater Blower Standard	1.5 Hp Heater Blower Standard
Jets	21 Hydro-massage water jets	28 Hydro-massage water jets	40 Hydro-massage water jets
Air Jets	N/A	12 Standard	12 Standard
Aromatherapy	N/A	Standard	Standard
Cabinet	Clear Cedar / Durawood	Clear Cedar / Durawood	Clear Cedar / Durawood
Light	L.E.D Lighting system	L.E.D Lighting system	L.E.D Lighting system
Ozone	Plasma Bubble Ozone system	Plasma Bubble Ozone system	Plasma Bubble Ozone system



Volcano jet



Storm jets

halifax spa

The Halifax Spa fits almost any location. This roomy but small spa is packed with all the features of a full size spa. It easily accommodates 4 adults. This is the perfect spa for your conservatory. Features include hot air blower with turbo, aromatherapy, ozone, hard top cover.



Weather resistant high quality cabinet

Water Capacity	155 Gallons 700 L
Dry Weight	483 lbs, 219 kg
Cabinet	84 x 67 x 38, 213 x 163 x 92cm
Seating Capacity	4-5
Controls	Digital M7 technology
Pump	4 Hp
Heater	3 kw
Blower	1.5 Hp Heater Blower Standard
Jets	30 Hydro-massage water jets
Air Jets	12 Standard
Aromatherapy	Standard
Cabinet	Clear Cedar / Durawood
Light	L.E.D Lighting system
Ozone	Plasma Bubble Ozone system

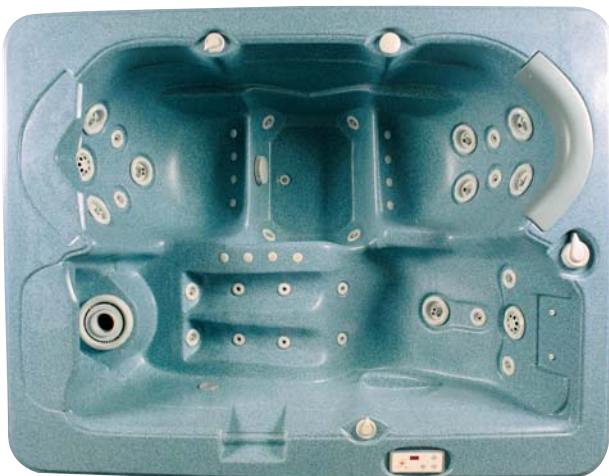


Neck blaster seat

montreal spa

The cosy Montreal Spa offers two bench seats and a body contoured lounger. This full depth spa is packed with power and features usually only found in large seat spas. Features include hot air blower with turbo, aromatherapy, ozone, hard top cover.

Water Capacity	155 Gallons 700 L
Dry Weight	483 lbs, 219 kg
Cabinet	84 x 67 x 38, 213 x 163 x 92cm
Seating Capacity	3-4
Controls	Digital M7 technology
Pump	4 Hp
Heater	3 kw
Blower	1.5 Hp Heater Blower Standard
Jets	30 Hydro-massage water jets
Air Jets	12 Standard
Aromatherapy	Standard
Cabinet	Clear Cedar / Durawood
Light	L.E.D Lighting system
Ozone	Plasma Bubble Ozone system



Full body seat with built-in headrest

ontario spa

This large 8 ft spa will be the centrepiece of your garden. This spa is build for exercise and relaxation using waters natural resistance and buoyancy. Features calf, thigh, neck and shoulder jets, waterfall, aromatherapy system, fibre optics and heated air blower with turbo. Options include a CD radio and DVD.



Model shown with optional DVD and CD / radio

Water Capacity	444 Gallons 2000 L	Blower	1.5 Hp Heater Blower Standard
Dry Weight	924 lbs, 420 kg	Jets	44 Hydro-massage water jets
Cabinet	92 x 92 x 40, 232 x 232 x 100cm	Air Jets	12 Standard
Seating Capacity	7-8	Aromatherapy	Standard
Controls	Digital M7 technology	Cabinet	Clear Cedar / Durawood
Pump	2 – 4 Hp pumps	Light	Fibre optics Lighting system
Heater	3 kw	Ozone	Plasma Bubble Ozone system

Insulated hard top safety cover



create your own sanctuary with

spa gazebos



Once you've got your spa you'll enjoy it so much you'll want to be in it all year round. And here's the perfect answer - a spa gazebo.

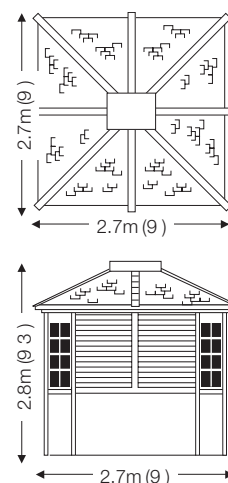
¥ Crafted in Western Red Cedar wood from British Columbia, Canada. They are made using traditional wood crafting techniques and give you total privacy.

¥ Western Red Cedar wood is ideal for British gardens, being naturally resistant to moisture. The natural oils in Cedar help protect the wood in all weathers.

¥ All of our spa gazebos will fit any of the garden spas shown in this brochure, or can be used on their own as an entertainment area for your garden.

All our gazebos have a built-in skylight, giving natural light during the day and a view of the stars at night.

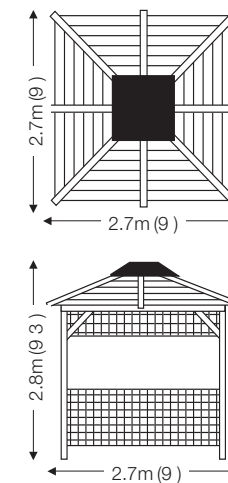
banff wrap gazebo



The Banff Wrap Gazebo has an adjustable louvered back wall which can be closed for privacy or open to allow in natural light.

The windows use aluminium tracks for easy opening. The roof features a new Cedar shingle finish, giving improved water resistance and an attractive Cedar panelling on the underside.

lattice spa gazebo



Sturdy corner posts support the lattice panels, which can be fixed down or raised for added privacy.



Spa chemical kit

All the chemicals you need to keep your spa pool healthy. Instructions included.

metal roof gazebos

Curved corner windows and full size sliding doors allow for privacy. These spa enclosures are ideal for spacious gardens allowing you to create your own outdoor living area. The metal roof exterior provides improved weather resistance.

All three designs have a skylight, which runs the length of the roof to allow in natural light during the day and a view of the stars at night.



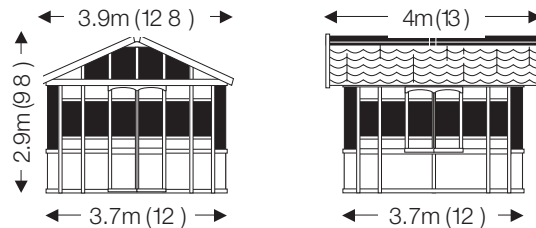
Spa cover lifter

Allows one person to take the cover on and off with ease. Protects the cover from damage and secures it to the spa.

You will need to allow 46cm (18 inches) clearance behind the spa. The cover fits all spas 2.4 meters (8ft) and under.

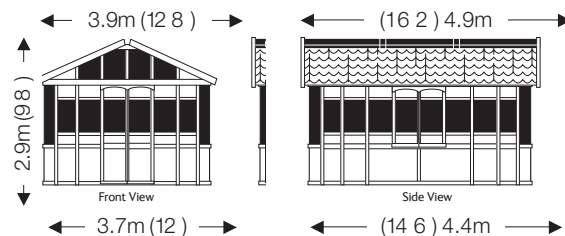
10' x 10' metal roof gazebo

Pad size required: 3.7 x 3.7 (12 x 12)



10' x 14' metal roof gazebo

Pad size required: 3.7 x 4.4 (12 x 14 6)



10' x 20' metal roof gazebo

Pad size required: 3.7 x 6.5 (12 x 21 4)

